

BEER CAN HAT

to crochet

Save your cans and make this fun holiday hat! Cut and punch 'em, join together with crochet. It'll be the talk of the town



KNITTING EDITOR:
MEG BLACK
PICTURE:
DAVID MIST

Materials: 2 balls each in white and red Lincoln's Peacock 5 ply acrylic, 2.50 crochet hook, 7 aluminium beer cans.

Size: To fit average adult head.

To Prepare Cans: With tin snips cut each tin can in half. Then cut 7 panels 10cm x 10cm. Round the corners and smooth edges. Half a cm in from edge punch a hole large enough to put a 2.50 crochet hook through at each corner. Punch 8 more evenly spaced holes along each side. With white yarn and hook work 2 dc in each hole around each panel.

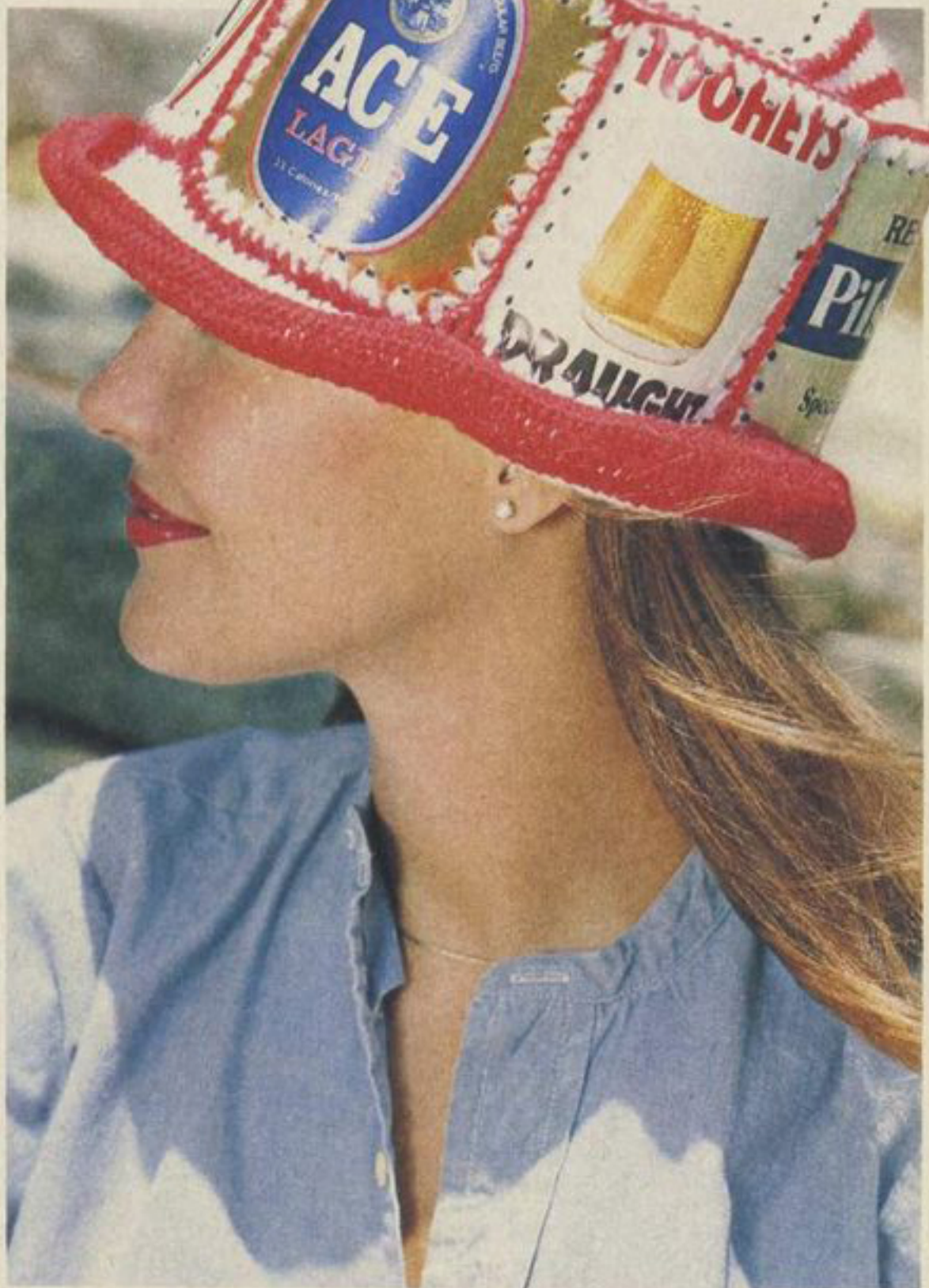
To assemble Panels: Top: 1st Row: Join red at corner of one panel. Work 2 tr in each dc at corners and 1 tr in each dc along sides. Join to first corner with sl-st.

2nd Row: Join white in space between 2 tr at corner of previous row, 3 ch (stands for 1 tr) in space, 2 tr in next tr * 1 tr in each tr of previous row to the tr before next corner sp, 2 tr in next tr, 1 tr in corner sp, 2 tr in next tr, rep from * until 4th corner is complete, then work 1 tr in each tr to last st, work 2 tr in last st, join to 3 ch with sl-st.

3rd Row: Join red at corner. Continue as last row working 2 tr between each 2 tr at corners and 1 tr in each other tr. (Each corner worked thus: 2 tr between 2 tr of last row, 2 tr in next st, 2 tr in between 2 tr of last row.)

4th Row: Join white at corner. Continue as previous rows working 2 tr between each 2 tr on corners, and 1 tr in other trs. (Each corner: 2 tr between 2 tr of last row, 1 tr in next st, 1 tr between tr, 1 tr in next tr, 2 tr between 2 tr of last row.)

5th Row: Join red at corner and work 1 row of half tr, inc as before. Fasten off.



Sides: Take two panels, wrong sides together, using red dc 2 panels together along one side. Continue joining panels together in this way until 6 are joined, then join into a circle. Pin the top to the sides of hat, with red dc the two sections together.

Brim: With red work * 1 tr on joining strip between 2 panels, 1 tr in each of next 5

dc, 2 tr in next dc, 1 tr in next 6 dc, 2 tr in next dc, 1 tr in next 5 dc, rep from * 5 times more, join to first tr with sl-st. Continue brim in tr working 1 tr in each tr of previous row and 2 tr over each 2 tr of previous row for increases, working 3 rows white and 2 rows red, then work 2 more rows red without increasing. Fasten off.